



# SUBSEA<sub>100</sub> GLOBAL LIMITED COMPANY PROFILE



## ABOUT US

Subsea100 Global Limited is a Survey and Construction Support Company incorporated in January 2012, registered as an indigenous company in Nigeria with a global presence in USA to provide services to the Oil & Gas Sector. Our head office is situated in Port Harcourt.

We have benefited from the high level of experience of our executive management team and network which has earned us a vast track record that exhibit professional experience in a variety of subdivisions.

We have an impressive pool of well-seasoned Engineers, Surveyors, ROV techs/Pilots, AUV operators/Tech, GIS Analyst, Data Management, QA/QC etc. Our services are provided with functionality and safety as key factors. We consistently achieve this by utilizing top of the class equipment. These services are, but not limited to Data Acquisition and Interpretation of Seabed Features such as (Geophysical Engineering Survey, Seismic (Nodes & Streamers), Aerial mapping with our experienced Drone Pilots, Positioning Engineering of Shallow and Deep-water Installations, Remote Monitoring Systems for Rig move Top-side and Subsea Construction, Survey Support and Monitoring during the tow-out of structures and prefabricated pipeline bundles; the installation of platforms and jackets; the placement of subsea infrastructure and the trenching of pipelines and cables etc.

Our Goal is to prioritize and commit to quality, health, safety and environmental high standards while maintaining impeccable integrity and saving time and money to the satisfaction of our clients. We work closely with our clients to establish the parameters and objectives of their projects, also contributing vast international experience of Inspection, Repairs & Maintenance, and decommissioning projects.

Our Aim is to provide a wholly integrated set of disciplines capable of performing the most challenging of remote inspection and intervention techniques with precise positioning, latest inspection technology and modeling services.

Our construction support services are designed to address marine installation, construction, and maintenance activities across the entire field.



## OUR SERVICES

<b>1. Offshore Renewable Energy / Wind Farm</b>	<b>4</b>
<b>2. Geophysical Engineering Survey</b>	<b>5</b>
<b>3. Seismic Survey, UHR, Nodes and Streamers</b>	<b>6</b>
<b>4. Geotechnical Investigation and Benthic Analysis</b>	<b>7</b>
<b>5. Dive Support</b>	<b>8</b>
<b>6. Positioning Engineering</b>	<b>9</b>
- Rig Move	
- Pipe Lay	
- Mooring Support of FPSO and Tug Management	
<b>7. Aerial Survey and Dimensional Control</b>	<b>12</b>
<b>8. ROV Support (IRM and Well Intervention)</b>	<b>13</b>
<b>9. Metrology and Well Marking (Acoustic and LiDar)</b>	<b>14</b>
<b>10. Inspection Services</b>	<b>17</b>
- Rope Access	
- Non-Destructive Testing (NDT)	
- Asset Integrity Management	
- ABS Vessel Inspection	
- Project Management	



**1. OUR CUSTOMERS**

Our customer's satisfaction is our number one priority, and all efforts will be made to ensure customer needs are met and exceeded each time, by listening and using customers input to improve quality while in compliance to regulations and standards. Services will be provided timely and at very cost friendly terms competitive with industry standards.

**2. OUR PEOPLE**

Our commitment to our staff is to ensure job satisfaction by guaranteeing:

- Professional training to ensure continuous development of employee's talents and competence.
- Motivate employees towards achieving company's goals by industry competitive compensation, profit sharing and bonuses, and
- Maintain work life balance with a safe & conducive working environment.

**3. HEALTH & SAFETY**

Every risk factor is expertly determined, assessed and adequately mitigated as low as reasonably practicable, as our focus on safety can be compared only to the best in the industry with an objective of zero safety incidents.

**4. ENVIRONMENT**

Our belief in maintaining a safe environment is ensured by being environmentally responsible and observing environmentally safe practices in all our operations.





## OFFSHORE RENEWABLE ENERGY / WIND FARM

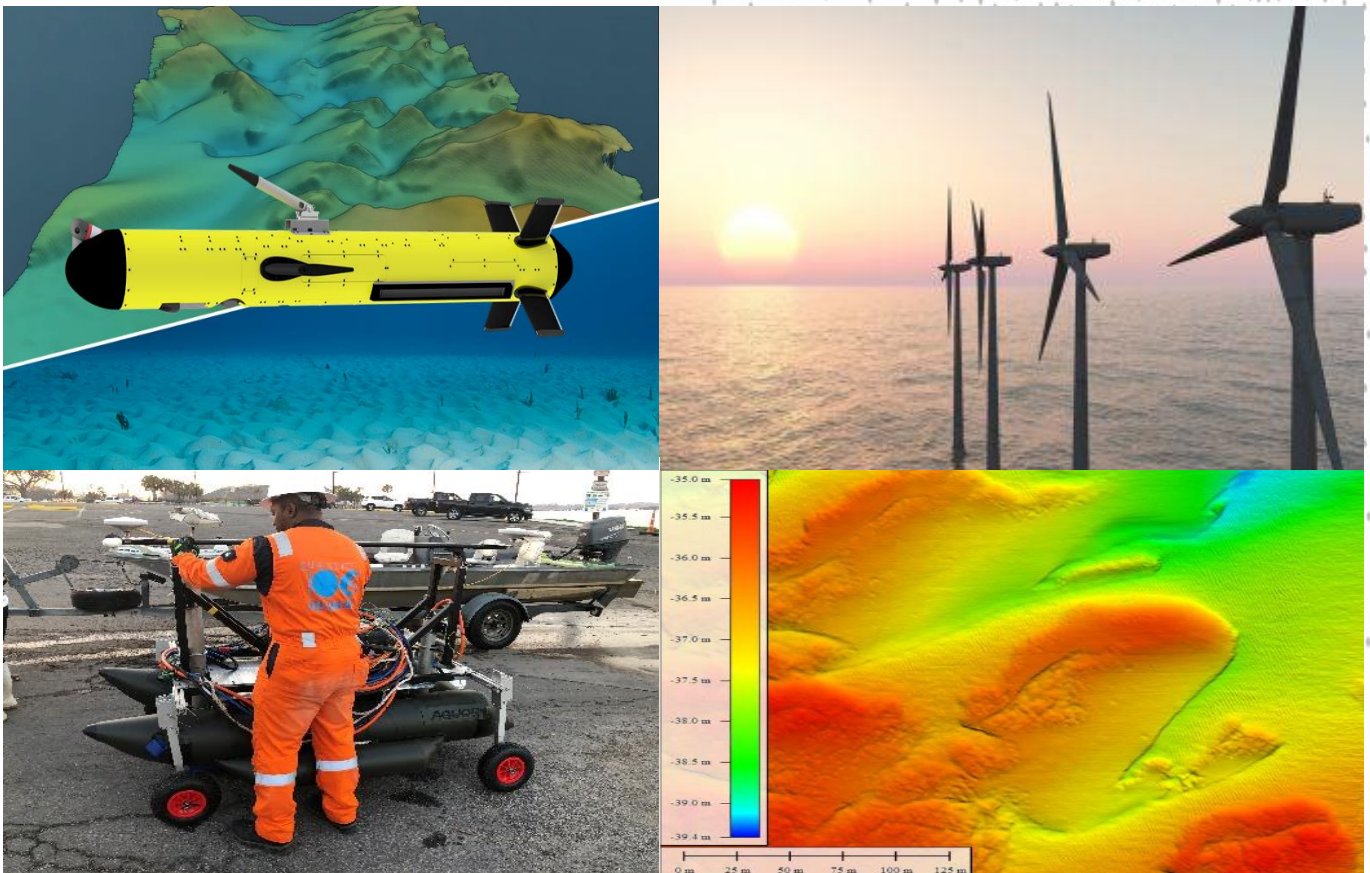
We provide a range of services to address the expanding need for offshore energy, including traditional oil and gas, as well as renewables such as wind, wave, and solar energy.

Our clients benefit from our application of machine learning, remote access and advanced processing techniques.

Our experts understand the seabed and sub-seabed risks to your offshore energy project throughout its lifecycle and will apply a thorough understanding of your project objectives to design effective hydrographic, geophysical, and geotechnical site investigations while also providing a cost-effective and efficient risk-based approach to UXO mitigation (Unexploded ordnance).

Our Services Include;

- Assessment of offshore sites and ground conditions, as well as early feasibility studies for offshore wind farms.
- Cable trenching, burial and protection assessments.
- Development and maintenance of geological and engineering 3D ground models for offshore wind farms.
- Geotechnical interpretive reporting (GIR).





# GEOPHYSICAL ENGINEERING SURVEY

## Geophysical Survey Services:

- Airborne Lidar Bathymetry (ALB) Cable Route Survey
- Environmental Baseline Surveys and Habitat Assessment
- Burial Assessment
- Desktop Studies
- Fisheries Habitat
- Hydrographic Mapping
- Support for Engineering Projects
- Hazard Surveys
- Underwater Infrastructure
- Inspection Debris Search
- Wreck Survey
- Dredging Analysis
- Stock Piling
- Dredging Channel Survey





## SEISMIC SURVEY, UHR, NODES AND STREAMERS

Our UHR (Ultra High Resolution) seismic services find their application in a wide range of activities, which requires a detailed knowledge of the sub bottom structures and seismic Stratigraphy:

Drill site surveys, pipeline / cable route surveys Offshore engineering projects / tunnels / bridges Wind farms foundation studies, Dredging for coastal, river and harbor projects, Sand searches / sand supply projects, Horizontal drilling projects, and Scientific seismic research projects.

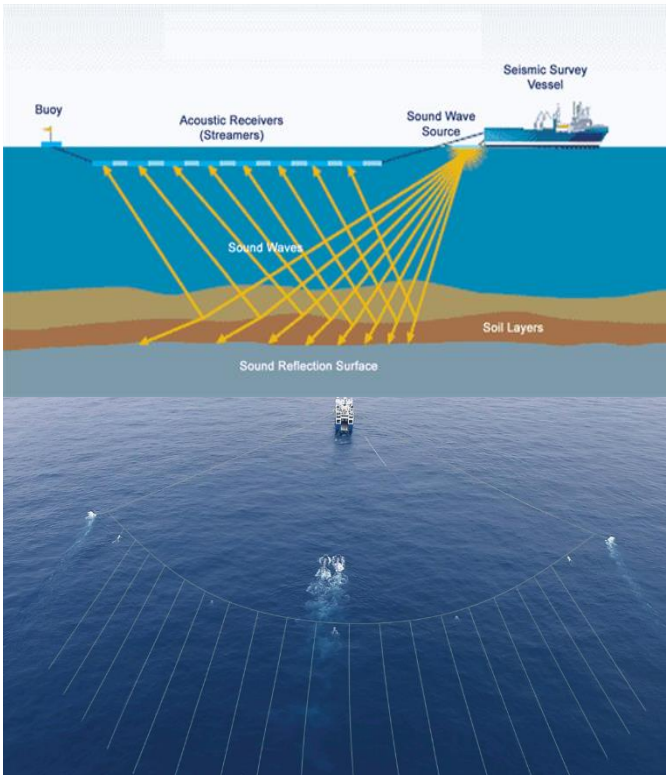
Our UHR multi-channel seismic services are often used for the detection of gas pockets in site surveys, but also to investigate shallow sub-bottom structures for large- scale offshore engineering projects such as tunnels and bridges.

Various end-users have selected our equipment as the best currently available in the industry. In response we continue to develop new methods to satisfy their demands.

Complete seismic processing and reporting services can be provided through our partners and our trained staff who have an outstanding know-how and experience in the elaboration of all UHR seismic data and associated data.

Our services also include the typical site survey data: Processing and interpretation of bathymetric data. Seismic data processing, from single channel to advanced multi-channel Seismic data interpretation, from 2D to full 3D

We utilize industry-standard or proprietary navigation and positioning systems to support conventional 2D and 3D streamer data acquisition as well as ultrahigh resolution 3D systems such as P-Cable





## GEOTECHNICAL INVESTIGATION AND BENTHIC ANALYSIS

We provide marine geotechnical services to determine and manage the ground risk associated with marine project development. Using technical expertise, advanced exploration tools, field and laboratory testing, computer simulations and quantitative methods, we identify, evaluate and resolve your geotechnical design challenges.

Our field data acquisition and sampling services are underpinned by our geotechnical expertise in executing complex and technically demanding projects.

Other key services include:

- Desktop studies
- Advanced laboratory soils and rock testing
- Soil and rock drilling
- Numerical and physical modelling of foundations
- Consultancy and Engineering analysis

From shallow coastal waters to ultra-deep-water ocean depths, our safe, cost-effective and technologically advanced geotechnical services include:

- Siting and stability of jack-up drilling rigs
- Foundation design for production platforms
- Slope stability analysis, mass flow simulation, and pipe impact assessments

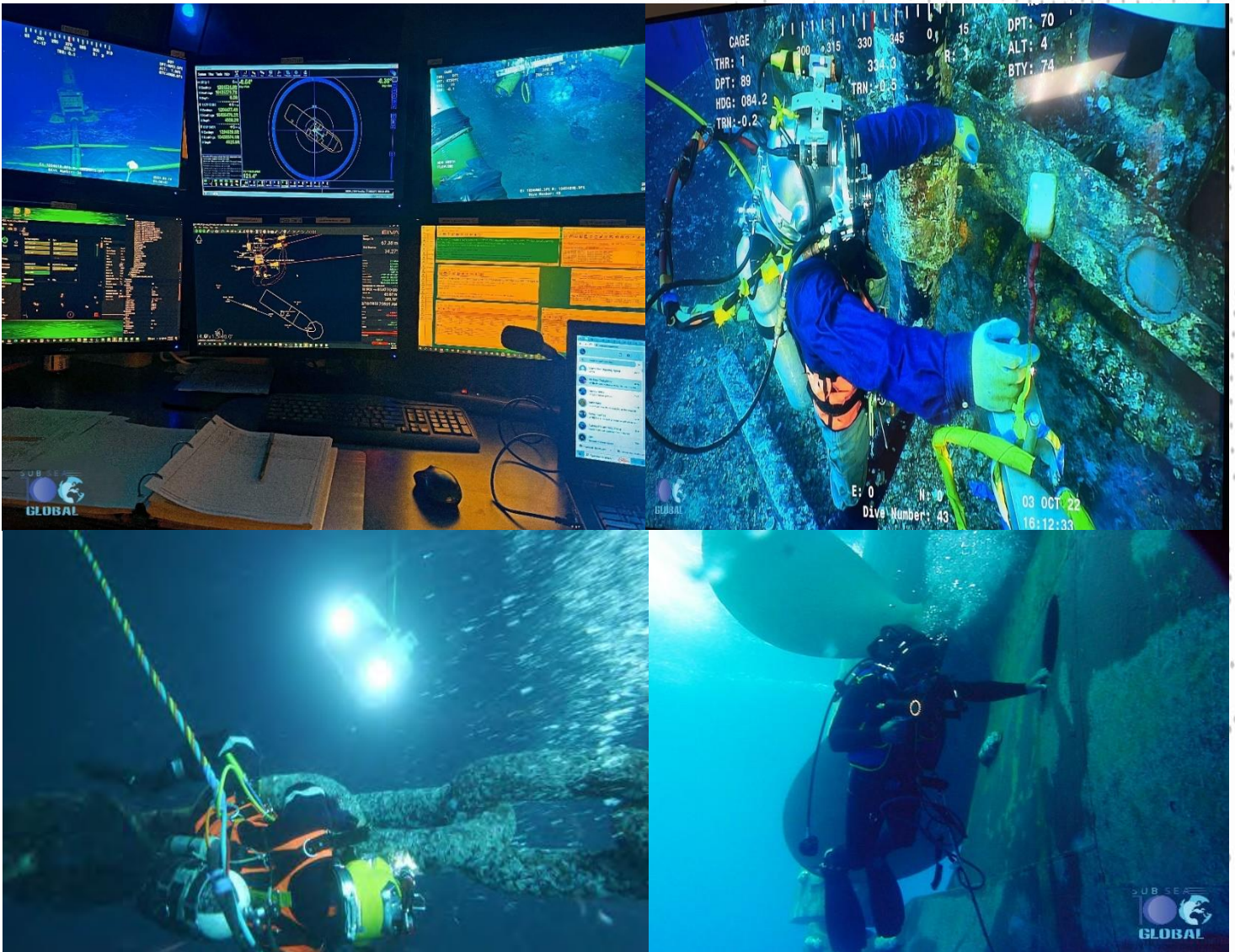




## DIVE SUPPORT

Subsea100 provides expert underwater diving services and also owns a vast range of subsea tooling, inspection and support equipment to deliver diving services on diverse projects. Our experienced team can advise on divers, equipment, mobilization, and ensuring smooth integration with your vessel's dive spread.

Our experience ranges from air diving, saturation diving, deep water ROV support (observation, intervention, and work class ROV support), and our track record includes subsea engineering, hyperbaric welding, and cathodic protection retrofitting for asset life extension. With our diving services supported by a fleet of dedicated dive support vessels, ROVs, and survey services, we provide a "one-stop shop" solution for your subsea projects.





## POSITIONING ENGINEERING

### *Rig Move*

Moving a rig safely and smoothly requires real strength, precise preparation, and solid expertise. Subsea100 has a proven track record of excellence in offshore drilling, rig movements, the successful deployment of high-quality lead, and supporting tugs in moving across ocean areas. We make certain that our activities are carried out in accordance with all regulatory standards.





## POSITIONING ENGINEERING

### *Pipe Lay*

We provide positioning and survey support for rigid and flexible pipe lay installation operations, along with jacket and deck installations. We provide integrated solutions of USBL (ultrashort baseline), Gyro USBL, LBL (long baseline), and/or INS (inertial navigation system) depending on the type of pipe, flexible pipe, or platform/jacket installation, either in shallow or deep water.

We specialize in positioning and navigation services for lay barges during pipe/cable lay operations, as well as AHT management. We support the entire pipeline laying process, from developing an appropriate route to positioning surface vessels, monitoring the pipeline's touchdown point, executing post-lay surveys, and reporting.





## POSITIONING ENGINEERING

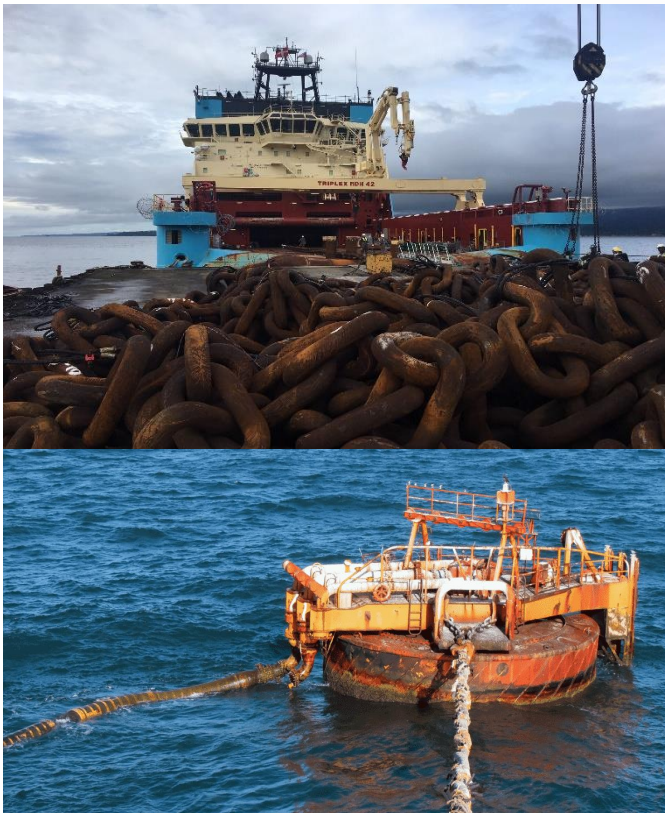
### *Mooring Support of FPSO and Tug Management*

We distinguish ourselves by our extensive understanding of mooring design and offshore mooring operations. We offer a comprehensive solution that includes engineering, mooring design, procurement, and installation, as well as maintenance and decommissioning.

We understand how important it is for your FPSO and FSO units to be installed, moored, and operated smoothly and reliably. Uptime and predictability are critical. With effective solutions for on-vessel mooring, riser pull-in, and offloading, we assist clients manage the offshore installation and operating phase of their FPSOs and FSOs.

Other key services include:

- Survey and positioning support during FPSO installations
- Unmanned rig position monitoring systems
- Calibration of Rig Gyros.





## AERIAL SURVEY AND DIMENSIONAL CONTROL

Subsea100 Global can help you measure terrain to design or monitor construction site progress, create drainage systems, conduct power line maintenance and inspections, inspect solar farms and telecommunication towers, agricultural mapping, monitor pipelines, and manage assets as well as many more projects in a variety of industries.

We offer a range of UAV acquisition either to supplement vessel-based surveys or as stand-alone campaign. Our mapping services include;

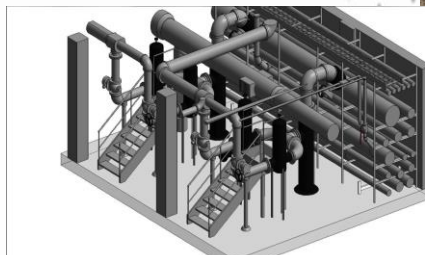
- Terrestrial Laser.
- Scanning.
- Aerial Lidar.
- Photogrammetry.
- Thermal Inspection.
- Search & Recovery.
- BIM Modeling
- SLAM LiDAR
- CAD Modeling

We have utilized the Wingtra, M300, and M600 drones on multiple projects for lidar and photogrammetry.

For terrestrial scanning, we have multiple scanners available: Leica RTC360, Faro S series, or Z&F 5016

Wingtra One Gen II is the perfect aircraft for large area photogrammetry and long linear runs

Phoenix Lidar Systems setup will capture it all in any Lidar project. No matter how big or small



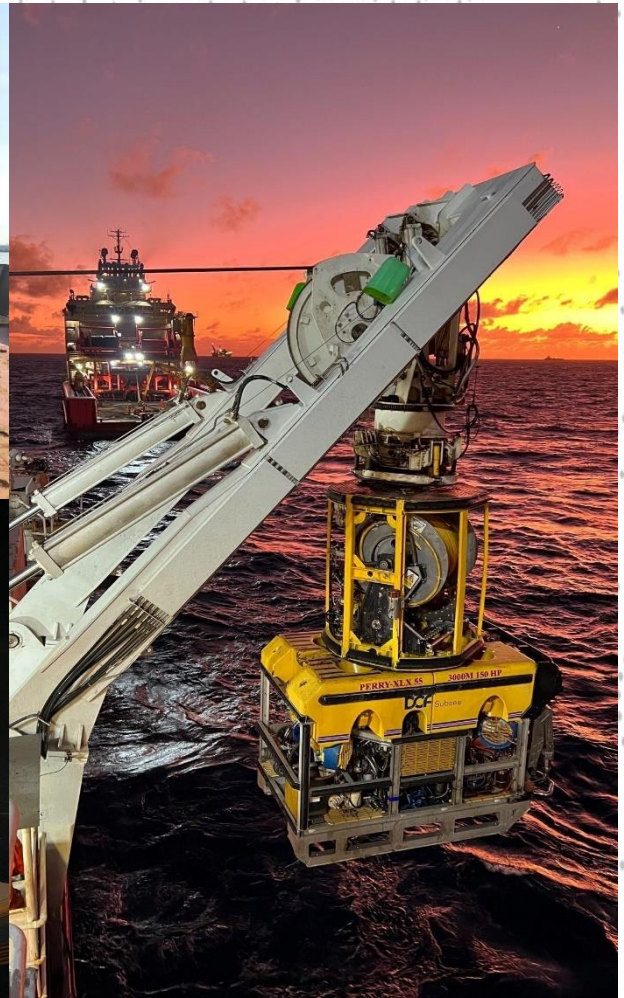


## ROV SUPPORT (IRM AND WELL INTERVENTION)

We have vast expertise providing ROV support services for a variety of oilfield projects such as Inspection, Repair, and Maintenance (IRM). We can provide a dependable solution for vehicle tracking and positioning by utilizing surface and subsea positioning equipment such as DGPS and USBL. In addition to positioning, we also offer inspection data acquisition and management..

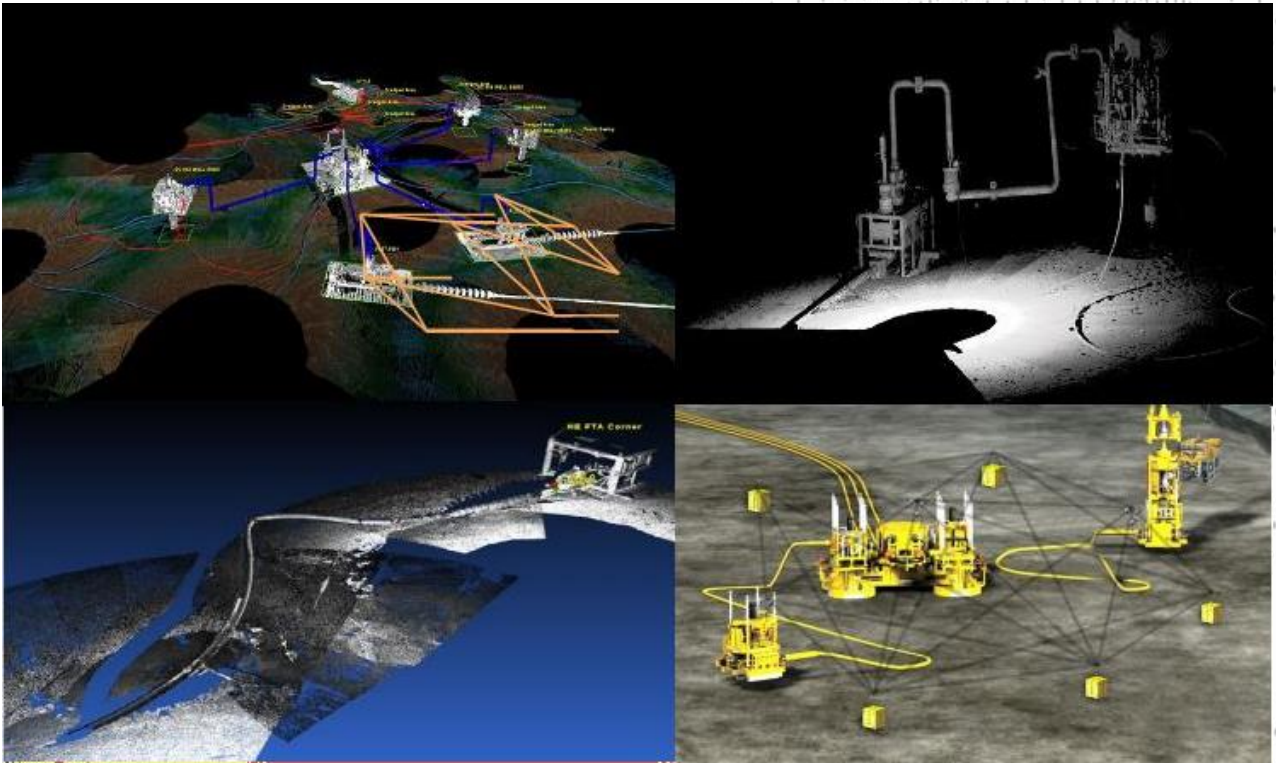
Our ROV Survey Services include:

- Pipelines, cables, umbilical's, structures pre-lay and pre-engineering surveys.
- Touchdown, installation monitoring, as laid, as-built, out-of-straightness, stability surveys, pre-installation and post installation survey
- Drilling support
- Subsea video, 3D visualization and 3D metrology
- Subsea Inspections, interventions and operations





## METROLOGY AND WELL MARKING (ACOUSTIC AND LIDAR)



ACOUSTIC METROLOGY: WELL, METROLOGY DP POSITIONING AND METROLOGY EQUIPMENT IN OUR LAB





## DYNAMIC LiDAR SOLUTION

### FIELD MAPPING AND ASSET INSPECTION

Using our Dynamic LiDAR solution, we can provide highly detailed 3D map with geolocated assets that pinpoint interconnecting cables and hydraulic lines.

SHG has several proven fast data collection methods for identifying leaks of production or commissioning fluids while in motion over well and manifolds.

This capability provides the potential for early signs of failure awareness or delayed startup commissioning rather than the more serious failed pressure test.

### DIMENSIONAL CONTROL FOR SUBSEA

SHG'S partner has developed the best practices for performing dimensional control surveys for subsea assets for use in spool metrology and life of field applications.

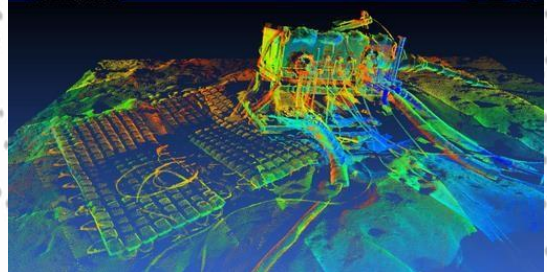
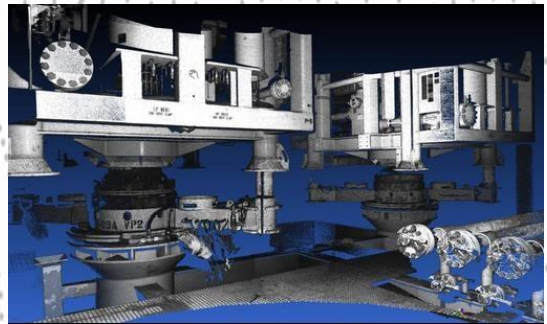
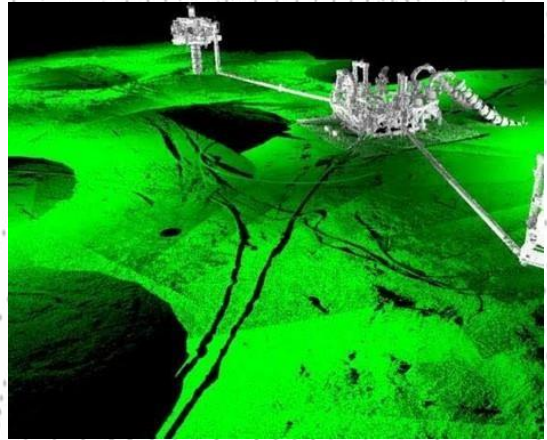
Subsea survey targets allow for the ability to locate key features such as hub faces and headings (flanges for horizontal spools).

## SUBSEA LiDAR METROLOGY

Subsea100 can provide highly accurate measurements required between the hubs on the subsea structures and pipelines for the spool piece to be constructed within the tight tolerances required in order to join the two hubs together.

### BENEFITS OF THE SUBSEA LiDAR

- Unparalleled accuracy in subsea imaging and mapping.
- As Found Mattress Installation using Lidar in 3dimension.
- Faster turnaround of project data.
- Increased safety to assets due to zero exposure to damage.
- Decreased disruption of project environment "Touchless". Create Baseline Point Cloud Maps for annual Vibration and movement displacement movement/settlement comparison.



**MATTRESS INSTALLATION As-Built Wide area mapping with 3D point clouds.**

Metrology and Structural Integrity Measurements

Damage Measurement & Leak Detection

Vibration and movement displacement

3D Data Processing and Modeling

As-Built Wide area Mapping with 3D point clouds

Scour/seabed stabilization

Pipeline Curvature

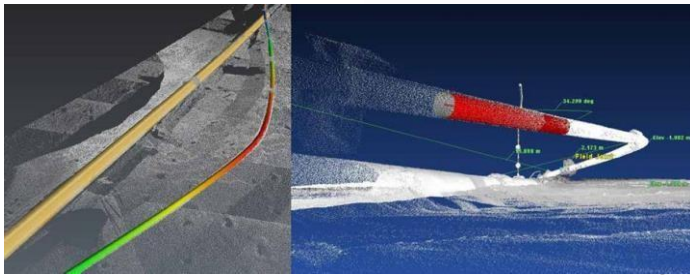
Subsea infrastructure Subsidence Measurement



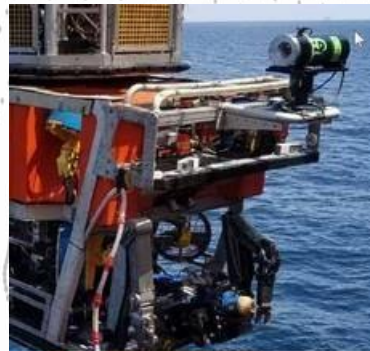
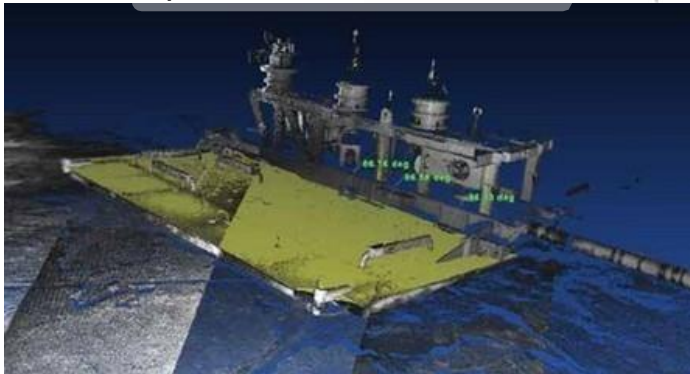
## SUBSEA LiDAR ANALYSIS

### PIPELINE CURVATURE ANALYSIS AND ANGULAR MEASUREMENT

- Cloud extruded to 3D Mesh. Curvature. Lateral
- Distance. Quantification of distances, angles and heights is straightforward.



Repeatable and accurate measurement



WORK CLASS ROV  
 about to dive



Diver Frame with  
 250 Umbilical

### LiDAR METROLOGY ON-GOING SAVING YOU VESSEL TIME

- As-built survey after successful completion of metrology.
- Saving our client vessel time and mobilization time.



## INSPECTION SERVICES

### *Rope Access*

In the **Marine & Offshore Industry**, application of **rope access** includes Hull Thickness Gauging, Close-Up Inspection of vessels using CCTV system, Lifting Gear Inspections, Anode Replacement, Derrick & Crane Inspections, Conventional & advanced Non-Destructive Testing (NDT) techniques, Structural Condition Surveys, Maintenance and Mechanical jobs.

At **Subsea100** we have a team that has been deployed on a number of projects. These projects have been safely carried out with Zero LTI.



The team installing a 24 inch export hose at OML 119



## INSPECTION SERVICES

### *Non-Destructive Testing (NDT)*

**NDT** is also known as Nondestructive Evaluation (NDE) and Nondestructive Inspection (NDI). The process allows materials to be evaluated without destroying or changing their properties.

**NDT** is intended to assure the long-term viability of your oilfield assets.

We have substantial experience utilizing the newest technologies that we make available to our customers making the most difficult projects a walk in the park.



#### **Conventional NDT Solutions**

Our conventional NDT inspection methods include the following:

- Ultrasonic Testing
- Eddy Current Testing
- Magnetic Particle Inspection (MPI)
- Visual Inspection
- Cathodic Protection
- Thermography
- Dye Penetrant Testing
- Borescope
- Radiography Inspection
- Leak Test
- Vibration analysis

#### **Advanced NDT Solutions**

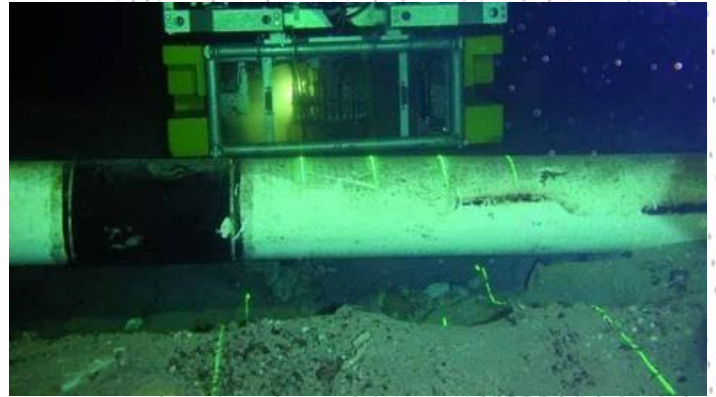
We offer the following advanced NDT inspection solutions:

- Digital Radiography
- AUT
- Alternating Current Field Measurement (ACFM)
- Magnetic Flux Leakage (MFL)
- Inspection under Insulation (CUI) / Pulsed Eddy Current Test
- Phased Array Ultrasonic Testing (PAUT)
- Internal Rotary Inspection System (IRIS)
- Time of Flight Diffraction (TOFD)
- Remote Field Eddy Current Test (RFT)
- B- Scan & Nano Scan Test for Elbow



## SUBSEA NDT

We offer a complete solution for underwater inspection comprising of preparation, offshore execution, and final reporting tailored to best-fit client specifications and timescales. We understand the challenges and then apply the best techniques (alternating current field measurement, eddy current testing, or ultra-sonics) depending on our clients' needs.



## CATHODIC PROTECTION

We provide a comprehensive range of cathodic protection services to protect and maintain the integrity of client assets.

These include project planning and coordination, offshore data acquisition, processing, and reporting.



**PIPELINE INTEGRITY: LOCATE BURIED PIPELINE**

Accurate site information is essential for successful offshore positioning.

An exposed cable or a free-span pipeline can easily result in a costly breakage, so Subsea100 Global provides a range of suitable methods for conducting route inspections.

Combined with time series analysis, we can visually demonstrate protection requirements due to currents, tides and movement of sediment.

We deploy specialized equipment such as ROVs for detecting, tracking, and mapping using Multi-beam, Side Scan Sonar and under-water videos to follow the route as accordingly and a remotely operated crawler for shallow water environment.

Subsea Hundred Global carries out pipeline inspection surveys to detect free-spans, damage, defects, leaks, erosion or pipeline movement, require innovative technology and experience.





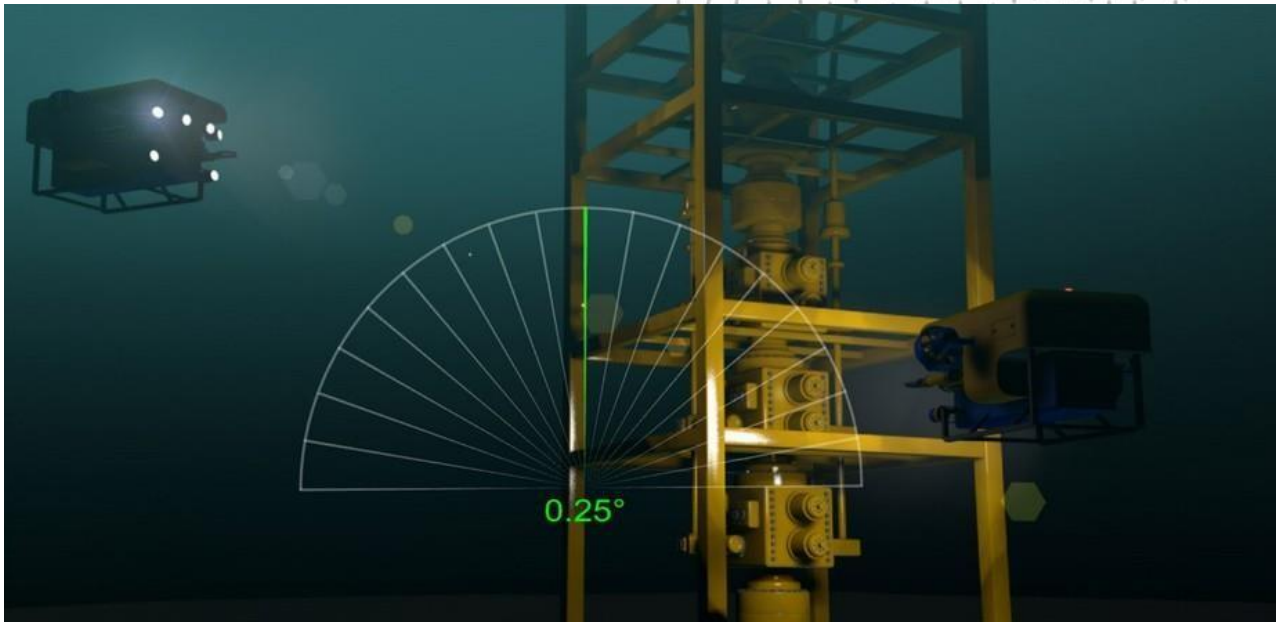
## INSPECTION SERVICES

### *Asset Integrity Management*

To prevent major accident and environmental hazard events it is essential that the integrity of systems and hardware is maintained throughout the lifetime of all assets.

To achieve this, a systematic approach is required to identify all potential degradation threats and ensure barriers are in place, effective, managed, and monitored.

We have a very experienced team of integrity engineers and technical staff who fully understand the importance of implementing bespoke, practical, and effective management frameworks for asset integrity management.





## INSPECTION SERVICES

### *ABS Vessel Inspection*

Recognized by the American Bureau of Shipping and awarded approved service provider status to conduct Hull Gauging to check the watertight integrity of the ship by inspecting the following areas of the ship:

- Close-up survey of the structures such as Shell, frames, bulkheads.
- Thickness measurement of hull
- Inspecting and Testing of Cargo Tanks
- Inspecting and Testing of Ballast Tanks
- Inspection and Testing of Hatch Covers and Coamings
- Inspecting and Testing fuel tanks, side and double bottom Tanks
- Inspecting Tanks On Board Ships



## INSPECTION SERVICES

### *Project Management*

At Subsea100 we believe that the safe delivery of successful projects depends solely on thorough project management and engineering proficiency.

Our project management team have extensive experience and expertise in planning, engineering and design, offshore construction, offshore installation, commissioning as well as decommissioning.

As we aim to proactively develop this capability, we aim to significantly add value to every phase of our projects.











## SURVEY SPREADS ON 24 HOURS OPERATION









## LIST OF OUR EQUIPMENT






S/N	EQUIPMENT	DESCRIPTION	IMAGE
1.	Side Scan Sonar + Topside	Edge-tech 4200	
2.	Magnetometer + Topside	G-882 Marine Magnetometer	
3.	Multibeam	R2 Sonic 2024 Multibeam	
3.	Navigation Software + Helmsman Display	Navipac	
4.	Motion Detection	TSS DMS-05 MRU	
5.	DGPS	Hemisphere VS1000	



S/N	EQUIPMENT	DESCRIPTION	IMAGE
6.	DGPS	C-Nav 3050	
7.	Surface Gyro Compass	TSS Meridian Gyro	
8.	Sector Scan for Touch Down Monitoring (TDP) and As Laid Survey with Tripod	Kongsberg MS1000	
9.	Sub-bottom Profiler	Edgetech 3200	
10.	Sound Velocity Profiler	Valeport Midas	
11.	Dual Frequency GPS Receiver (GNSS/RTK)	Pacific Crest ADL Vantage Radio	

S/N	EQUIPMENT	DESCRIPTION	IMAGE
12.	Digital Pipe Locator	Leica 6014157 DD130 Underground Locator	
13.	Ground Penetrating Radar (GPR)	PinpointR	
14.	Total Station and accessories	Leica Nova MS60 Multistation	
15.	Digital Level	Leica Sprinter 250m Digital Level	
16.	Geodetic Level	Leica NA2 Optical Level	
17.	UAV Laser Scanning	DragonFly UAS	



S/N	EQUIPMENT	DESCRIPTION	IMAGE
18.	USBL	USBL Ranger 2	
19.	Weather Station	Directional Waverider MKIII	
20.	LBL	Sonardyne Compatt 6 LBL	
21.	Digital Level	Leica Sprinter 250m Digital Level	
22.	Telemetry Radio	Satel Telemetry Radio	

S/N	EQUIPMENT	DESCRIPTION	IMAGE
23.	DGPS	Applanix POS MV Oceanmaster	
24.	Heavy Work Class ROV	Triton MRV 150 HP Work Class ROV	
25.	USBL	ixblue GAPS USBL	





## TRACK RECORD

PROJECT	LOCATION	CLIENT	YEAR
Inspection of 6 Flexible Risers on Mystras FPSO (On-going)	OML 119 Okono-Okpoho, Nigeria	ILF Consulting Enginners/NPDC	2023
Single Buoy Mooring Repairs	OML 49 Escravos Field, Nigeria	Pisces Offshore Limited	2023
AUV Geophysical Survey	OML 118 Bonga Field, Nigeria	Marine Platform Limited/Ocean Infinity/SNEPCo	2023
Equipment Hire	Rivers State, Nigeria	Batoil Services Nigeria Limited	2022
Abo4 Subsea Asset GVI	OML 123 Abo Field, Nigeria	Marine Platform Limited/Nigerian Agip Oil Company	2022
Full Spread Geophysical Survey. Pipeline	OML 17	AquaEarth Consulting Heirs Oil & Gas	2022
Oyo Mooring Chain Recovery	OML 120 Oyo Field, Nigeria	Oceananic Marine Services LLC/Century Energy	2022
Okono-Okpoho Subsea Flexible Pipeline Replacement. (Project Mgt).	OML 119 Okono-Okpoho, Nigeria	Melcurt/NPDC	2022
24" Export Hose Change-Out at OML 119 (Okono-Okpoho) (Rope Acces & Project Mgt).	OML 119 Okono-Okpoho, Nigeria	Melcurt/NPDC	2022
Pre-Lay Survey Services on Meren 16" Pipelay project. (Project Mgt).	Meren Field/Chevron Nigeria	Chevron/Prime Sources Limited	2022
Bayou Ethane Lowering (Pipeline Survey)	Port Arthur Texas, USA	WILLIAMS OIL & GAS	2021
Dive Support & Survey of the 24" McMullen Lateral System Lines Depth of Cover	South Texas Offshore, USA	WILLIAMS OIL & GAS	2020
ML Installation Phase	Okono-Okpoho Field, Nigeria	CESL, IOC & FT GeoSolutions	2020

PROJECT	LOCATION	CLIENT	YEAR
Geophysical Engineering Survey of the Sandy Hook buried and exposed pipeline	New Jersey & New York. Atlantic	WILLIAMS OIL & GAS	2020
Renewable Natural Gas Pipeline Crossing	West Texas Offshore, USA	WILLIAMS OIL & GAS	2020
Wind Farm Geophysical Engineering Full Spread With Sonardyne USBL.	Virginia Offshore Atlantic, USA	Terrasond & Avingrid Renewables	2019
CP/ROV Free Span Pipeline/Riser Inspection (Mobil Field Nigeria)	Mobil Field, Nigeria	Topaz Isra/Geodetic Offshore Services Ltd (GOSL)/Mobil	2019
BONGA Well Intervention - With LBL Positioning	OKPOHO Field, Nigeria	Marine Platform/SNEPCo	2019
AUV Inspection	Mississippi, USA	ORSTED, Denmark	2019
BONGA Well Intervention - With LBL Positioning	OKPOHO Field, Nigeria	Marine Platform/SNEPCo	2019
BONGA Well Marking and Metrology	Gulf of Guinea (Deep Water), Nigeria	Marine Platform/SNEPCo	2018
Multi-beam & Geophysical Engineering Survey (Full Spread).	Gulf of Mexico	Hokchi/Mpi/Marinsa	2018
Installation of shims.	Core Base Mobile Alabama (Fabrication yard), USA.	SUBSEA7–USA	2018
Buckskin Project Bend Stiffener Latch Mechanism (BSLM) Installation + Pull Tube Drifting + Sleeper Installation	Gulf of Mexico, USA.	LLOG Exploration Company LLC– Gulf of Mexico, USA.	2018
Bwolf/Red Zinger/Claiborne Subsea Development	Gulf of Mexico (Deep Water), USA.	LLOG Exploration Company LLC–USA.	2018



PROJECT	LOCATION	CLIENT	YEAR
Geophysical and Geotechnical Survey	Nigeria /Exxon Mobil Field (Inanga)	BatoilBeagle-1 /Tenoil Petroleum E&P	2018
OCTP Gas Sea line Project (Pipelay, Touchdown Monitoring)	Ghana / ENI Field	Seminole Miccapori / Subsea7	2018
Acoustic Metrology, Manifold Installation, Well Demarcations, Buoyancy Module Installation, Pile Installation, THS Installation & Jumper Installation.	Gulf of Mexico, USA.	SHELL- APPOMATTOX– Gulf of Mexico, USA.	2018
Pipeline Route and Platform Installation Geophysical Survey; and Geotechnical Survey. (EESP Project)	Nigeria / Chevron Field, Escravos	West African Venture/Chevron Limited	2018
LLOG Subsea Asset Scanning (Jumper Metrology, Baseline Survey, Crossing & Sleepers Survey).	Gulf of Mexico, USA.	LLOG Exploration Company LLC–USA.	2018
Jumper Metrology from Tubing Head Spool (THS) to Manifold Hub. (STAMPEDE)	Gulf of Mexico, USA.	HESS– Gulf of Mexico, USA.	2018
LLOG Subsea Asset Scanning (PLET, PLEM, JUMPERS, RISERS & HUBS).	Gulf of Mexico, USA	LLOG Exploration Company LLC–USA.	2017
Installation of Transponder with Motion Gyro Compass (MGC) on the Manifold	Port Fourchon Louisiana, USA	HESS/Stampede	2017
Geophysical survey of Segment 8 Re route/Division cable Route Survey Of Lekki Beach.	Nigeria	HMT 2/ Humber Marine Wreck/Vewat	2016
Jumper Metrology from Tubing Head Spool (THS) to Manifold Hub. (STAMPEDE)	Gulf of Mexico, USA.	HESS– Gulf of Mexico, USA.	2018
LLOG Subsea Asset Scanning (PLET, PLEM, JUMPERS, RISERS & HUBS).	Gulf of Mexico, USA	LLOG Exploration Company LLC–USA.	2017
Installation of Transponder with Motion Gyro Compass (MGC) on the Manifold	Port Fourchon Louisiana, USA	HESS/Stampede	2017
Geophysical survey of Segment 8 Re route/Division cable Route Survey Of Lekki Beach.	Nigeria	HMT 2/ Humber Marine Wreck/Vewat	2016

PROJECT	LOCATION	CLIENT	YEAR
ODD and BARATARIA Job Umbilical Installation with EFL, SFL & OFL Installation in the Mississippi Canyon 215 & 521 deep-water Project. Seabed survey/Diving survey support	Gulf of Mexico	Deep Gulf Energy	2016
Seabed survey/Diving survey support	Nigeria	Iyak A in Mobil field for Hydrotab services Ltd	2016
Pre-Lay Survey, As-Left, GVI, LBL Installation using ROVINS/INS/RAMSES and Mattress Installation.	Houston, Texas, USA	Walter Oil & Gas– Gulf of Mexico, USA.	2016
QC/Reporting on Offshore Geotechnical	Netherlands	Fugro	2015
Seabed geophysical survey	Nigeria	Oriental Energy offshore /SEGPE Global Ltd	2015
GUNFLINT PIPELINE CROSSING: Mattress & Mud Mat Installation Survey & Positioning.	Gulf of Mexico	EMAS /Noble Energy	2015
THUNDER HAWK STEEL CATENARY RISER INSTALLATION for Lewek Constellation.	Gulf of Mexico	EMAS /Noble Energy	2015
Geophysical Survey of Lagos Inland waterway	Lagos, Nigeria	Integrity GeoSolution Nigeria Limited for Atlantic Marine Ltd/SHG	2015
SHAH DENIZ-2 PROJECT: PIN PILE INSTALLATION PROJECT & LBL METROLOGY .	Caspian Sea Baku, Azerbaijan	Saipem/British Petroleum & Exploration (BP)	2015
Geophysical Survey	Nigeria / Chevron Field	MV Aleutian /Geodetic Offshore Services Limited	2013
Seabed geophysical and geotechnical survey	Gulf of Mexico	Topaz Isra/Geodetic Offshore Services Ltd (GOSL)/Mobil	2013
Bathymetric Survey of Letugbene River	Nigeria	Nigerian Agip Oil Company (NAOC)	2012
Seabed/Bathymetry survey/Geotechnical	Nigeria	Escravos offshore/ Chevron Nigeria	2012



## OUR PARTNERS



NIGERIA OFFICE  
5 Chief Mgba Street, Rumurolu, Woji, PH,  
Nigeria NIG Tel: +234 84 555 226  
NIG Cell: +234 (0) 706 177 0589

U.S.A OFFICE:  
5100 Westheimer Rd, Suite 200,  
Houston TX. 7076 USA  
US Tel: +1713.808.9539 Cell: +1 832 5700563

[info@subsea100.com](mailto:info@subsea100.com)